



Now up to 200 mm
drilling diameter



Diamond core drilling unit DB 200



The compact unit for drilling up to Ø 200 mm

APPLICATION:

- Wet drilling in reinforced concrete, natural stone and asphalt
- Sanitary, heating and ventilation construction, civil engineering, landscape construction

FEATURES:

- Switch with over current cut-off – protection against overloading of the motor
- Cut-off carbon brushes – protection of the motor
- 1-speed oil bath gearbox – optimal lubrication
- Mechanical safety clutch
- Integrated water supply
- Stainless steel-combination spindle for connecting to R $\frac{1}{2}$ " and 1 $\frac{1}{4}$ " drill bits
- Motor and rig as a complete unit
- Handy, robust and economical
- Space-saving, compact drilling unit – low weight



SPECIFICATIONS	DB 200
Power input	2500 W
Rated voltage	230 V ~
No-load speed	675 rpm
Max. drilling diameter	200 mm
Spindle connection	G $\frac{1}{2}$ " female + 1 $\frac{1}{4}$ " male
Column length	790 mm
Hub	550 mm
Weight	15.5 kg
Order no.	0B33E000
Supplied	in a box without accessories



A

Diamond core drilling units ACCESSORIES

H I J

**Diamond drill bits and
drill bit extensions**
see page 53



Sharpening block
200 x 100 x 50 mm



Sharpening plate
320 x 320 x 55 mm

Copper ring 1 1/4"
for easy removal of the drill bit
1 piece

Slider quick release ring 1 1/4"
for drill bits
1 piece

Dust extraction
1 1/4" f-1 1/4" m



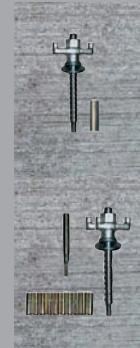
Water tank
5 l plastic
incl. 4.0 m hose
with Gardena-Connector

10 l metal
incl. 3.5 m hose
with Gardena-Connector

Quick action bracing unit
1.7-3 m Hub



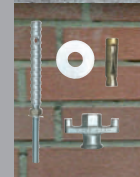
Wheel axle
for BST 182 V/S, BST 250



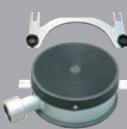
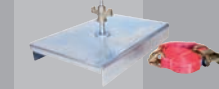
Tightening screw
with wing nut, washer,
1 dowel M 12, Ø 16 mm

Fastening set concrete/stone
10 dowels M12, Ø 16 mm,
tightening screw,
wing nut, washer,
1 punch bolt

Fastening set brickwork
dowel M 12, Ø 20 mm,
tightening screw,
wing nut, washer



Tube drilling device
for drill rig



Water suction ring



Spare seal
for Water suction ring



**Industrial vacuum
cleaner**



Vacuum plate
for KBS 250



Vacuum plate
for BST 250, 300, PLB 450



Vacuum set
for BST 182 V/S, BST 352 V



Vacuum hose
Length 3 m



Vacuum pump VP 03
Duty: 25 l/min,
Max. drilling-Ø: 150 mm,
Max. vacuum: 850 mbar



Vacuum pump VP 04
Duty: 100 l/min,
Max. vacuum: 900 mbar

Drill rigs and diamond core drilling units ACCESSORIES

		BST 50 V	BST 90	KBS 250	BST 182 V/S	BST 250	BST 352 V	PLB 450	PLB 450 G	DB 200	DBE 162	PLE 182	DBE 182	DBE 250	DBE 352	PLE 450
Core drill motor ETN 162/3	03E31000				x						x					
Core drill motor PLD 182	0343P000				x							x				
Core drill motor EBM 182/3	03E33000				x								x			
Core drill motor EBM 250/2 RP	0352H000					x	(x)	(x)	(x)					x		
Core drill motor EBM 352/3	03641000					(x)	x	(x)	(x)						x	
Core drill motor PLD 450.1 B	0373C000					(x)	(x)	x	x							x
Copper ring 1¼"	35450000				x	x	x	x	x	x	x	x	x	x	x	x
Slider quick release ring 1¼"	35652000				x	x	x	x	x	x	x	x	x	x	x	x
Dust extraction 1¼" f-1¼" m	35231000				x	x				x		x	x	x		
Fastening set concrete/stone	35720000		x	x	x	x	x	x	x	x	x	x	x	x	x	x
Dowels for concrete/stone	35722000		x	x	x	x	x	x	x	x	x	x	x	x	x	x
Tightening screw	35721000		x	x	x	x	x	x	x	x	x	x	x	x	x	x
Fastening set brickwork	35724000		x	x	x	x	x	x	x	x	x	x	x	x	x	x
Dowel for brickwork	35725000		x	x	x	x	x	x	x	x	x	x	x	x	x	x
Quick action bracing unit	35730000		x	x	x	x	x	x	x	x	x	x	x	x	x	x
Wheel axle	3582B000				x						x	x	x			
Wheel axle	3582C000					x								x		
Water tank 5 l	35811000	x	x	x	x	x	x	x	x	x	x	x	x	x	x	x
Water tank 10 l	35812000	x	x	x	x	x	x	x	x	x	x	x	x	x	x	x
Water suction ring WR 160	35875000									x						
Water suction ring WR 202	3587C000				x						x	x	x			
Water suction ring WR 300	35879000					x								x		
Water suction ring WR 352	35873000						x								x	
Water suction ring WR 350 PL	3587Y000							x ¹								x
Water suction ring WR 350.1 PL	3587L000							x ²	x							x
Spare seal ED 152	3586A000									x						
Spare seal ED 202	3586K000				x						x	x	x			
Spare seal ED 300	35868000					x								x		
Spare seal ED 352	3586L000						x	x	x						x	x
Industrial vacuum cleaner DSS 25 A	09915000		x	x	x	x	x	x	x	x	x	x	x	x	x	x
Industrial vacuum cleaner DSS 50 A	09916000		x	x	x	x	x	x	x	x	x	x	x	x	x	x
Tube drilling device	35731000		x		x	x	x	x	x	x	x	x	x	x	x	x
Vacuum plate	35851000			x						x						
Vacuum plate	35857000					x		x	x					x		x
Vacuum set	35854000		x													
Vacuum set	3585F000				x						x	x	x			
Vacuum set	3585G000						x								x	
Vacuum hose	35855000		x	x	x	x	x	x	x	x	x	x	x	x	x	x
Vacuum pump VP 03	09201000		x	x	x					x	x	x	x			
Vacuum pump VP 04	09204000		x	x	x	x	x	x	x	x	x	x	x	x	x	x
Sharpening block	35910000	x	x	x	x	x	x	x	x	x	x	x	x	x	x	x
Sharpening plate	35913000	x	x	x	x	x	x	x	x	x	x	x	x	x	x	x
Reducing ring Ø 60 - Ø 53 mm	35820000			x												
Reducing ring Ø 60 - Ø 43 mm	35821000			x												
Connecting adapter universal tool holder/collar Ø 60 mm	35829000				x	x	x					x				

(x) limited suitability X¹ until year of manufacture 2016 x² from year of manufacture 2017